

EDIFICIO MAGAZZINO

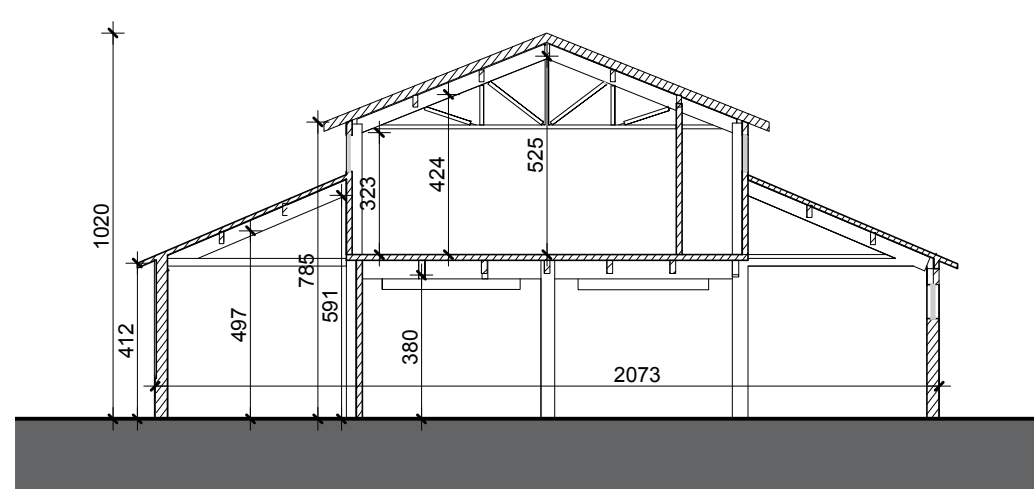
1:200



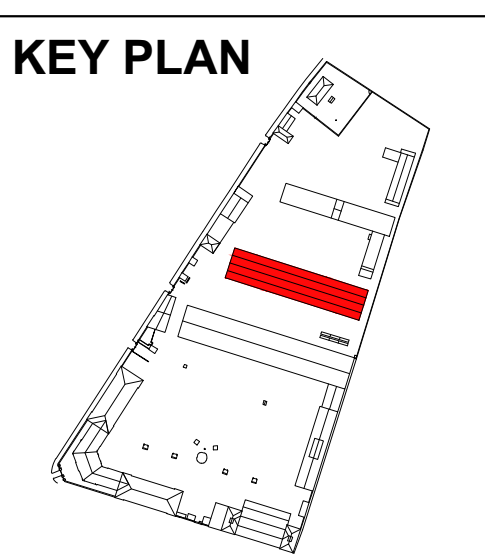
Calcolo SLP

Piano Terra	Piano Primo
A: 92.73x5.07= 470.14	D: 10.61x92.65= 983.02
B: 92.73x10.56= 979.23	SLP= 983.02
C: 92.73x5.13= 475.70	
SLP 1925.07	SLP_TOT= Piano Terra + Piano Primo
	2908.9 m²

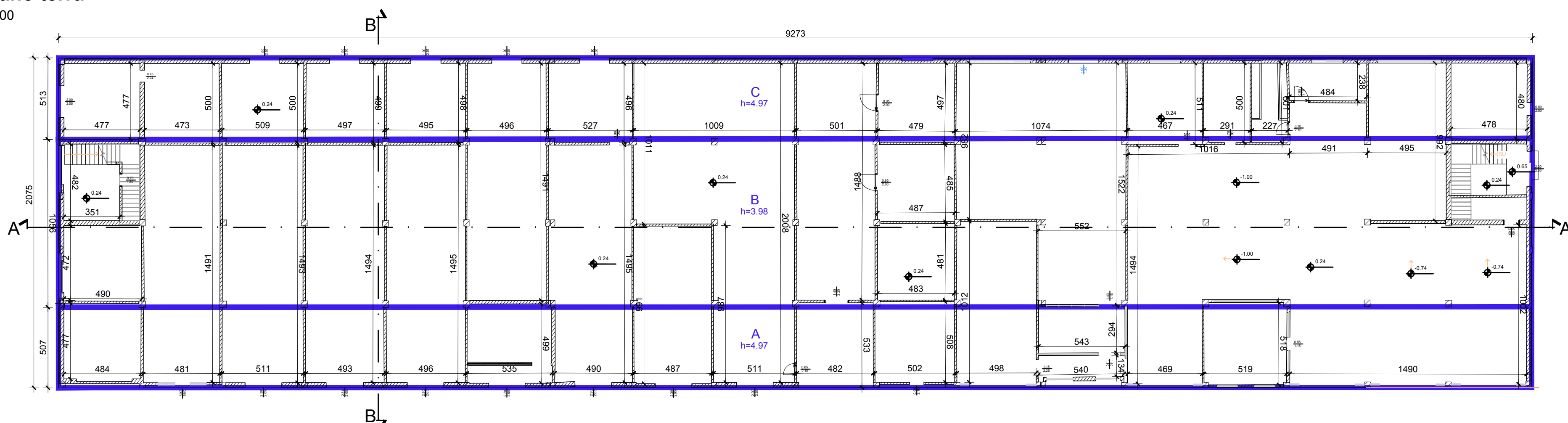
Sezione BB
1:200



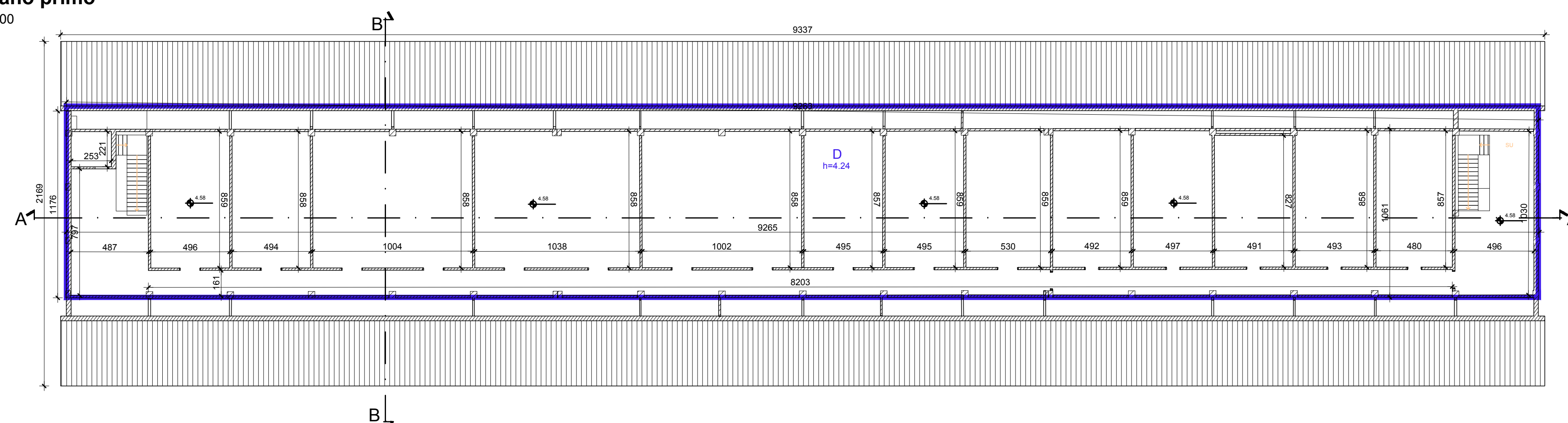
KEY PLAN



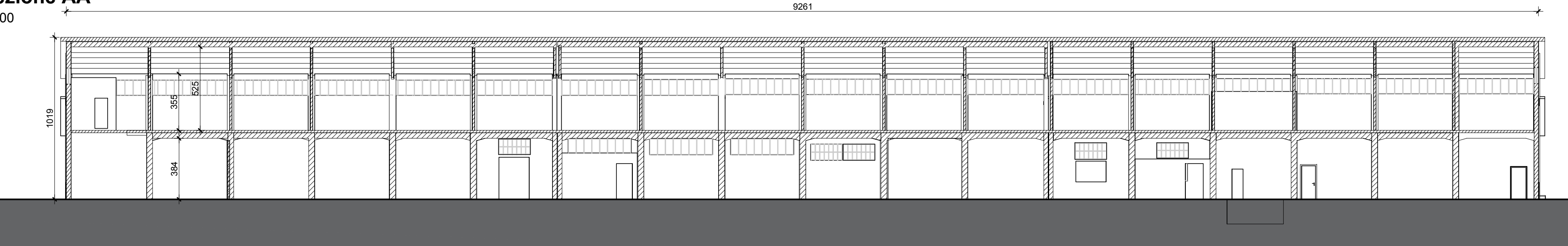
Piano terra
1:200



Piano primo
1:200



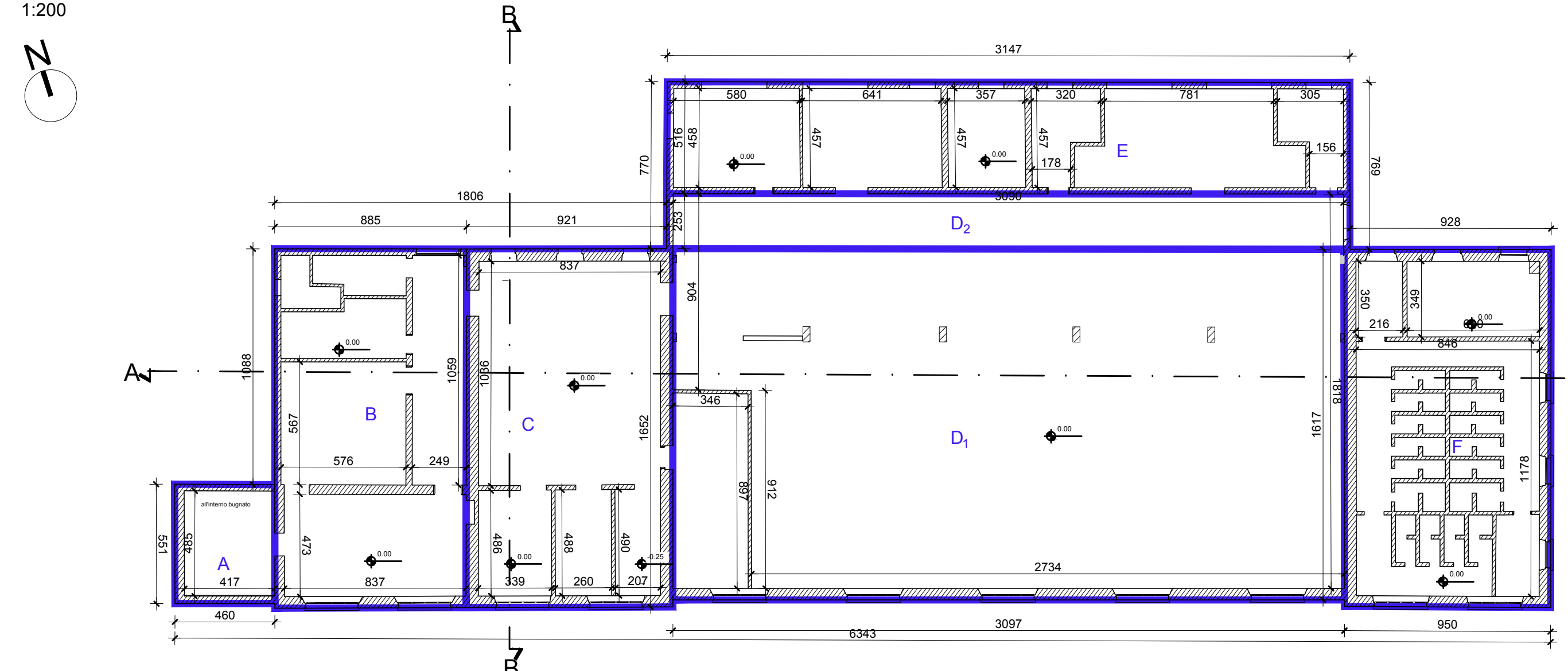
Sezione AA
1:200



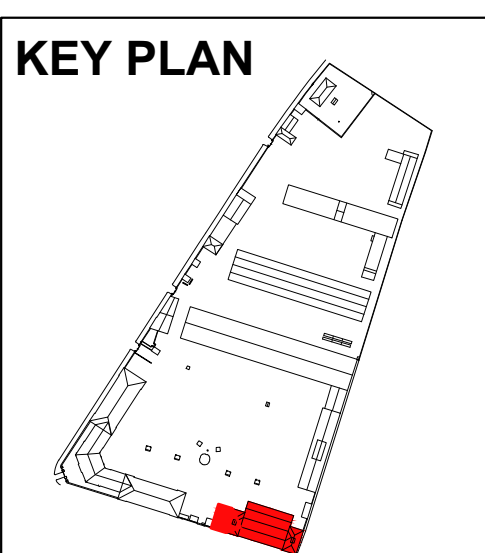
EDIFICIO MENSA

1:200

Piano terra
1:200



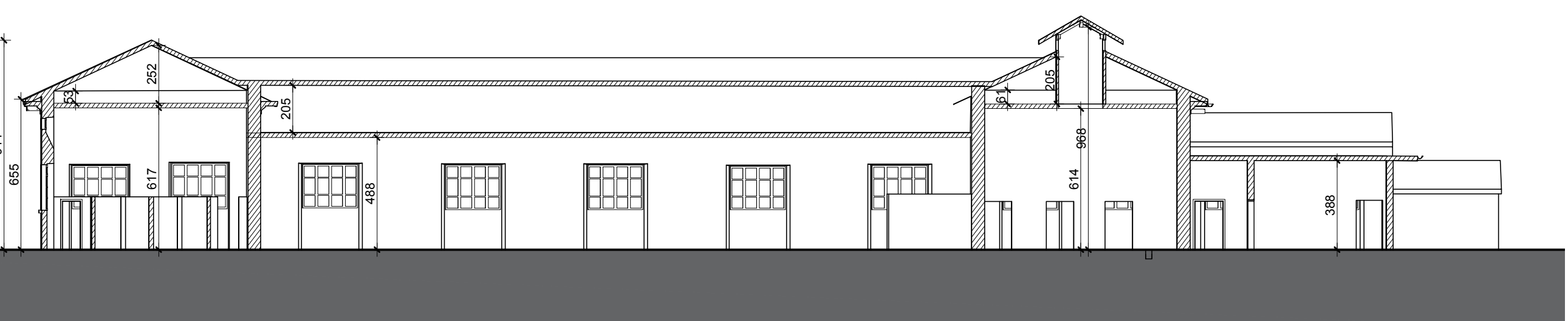
KEY PLAN



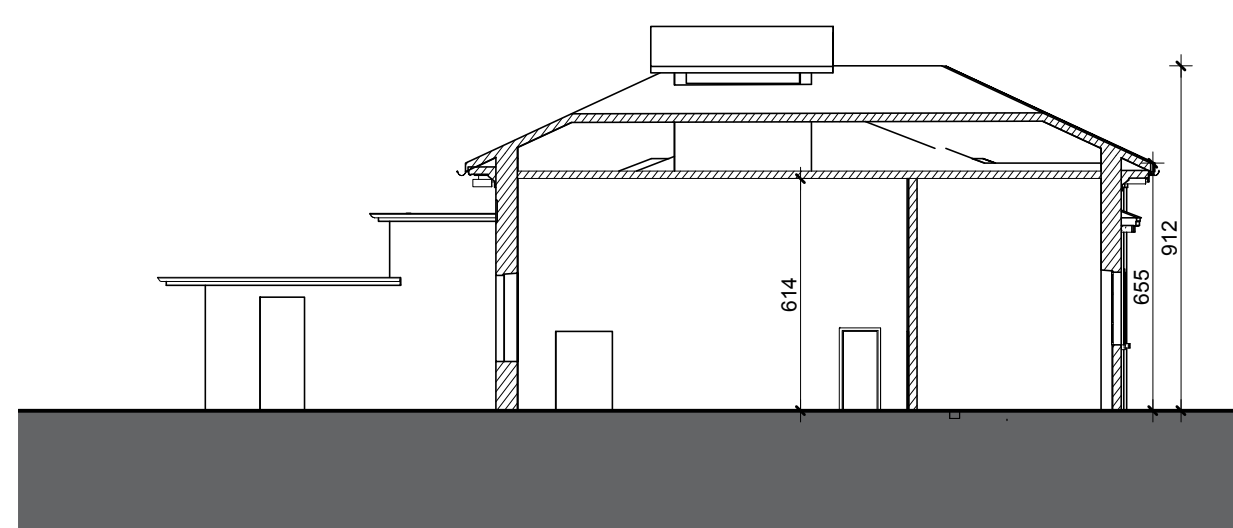
Calcolo SLP

A: 5.51x4.60 m= 25.35 m ²
B: 8.55x16.52 m= 141.25 m ²
C: 9.21x16.52 m= 152.15 m ²
D ₁ : 30.97x16.17 m= 500.78 m ²
D ₂ : 31.47x2.53 m= 79.62 m ²
E: 31.47x5.16 m= 162.38 m ²
F: 9.50x16.51 m= 156.84 m ²
SLP= A+B+C+D₁+D₂+E+F= 1218.37 m²

Sezione AA
1:200

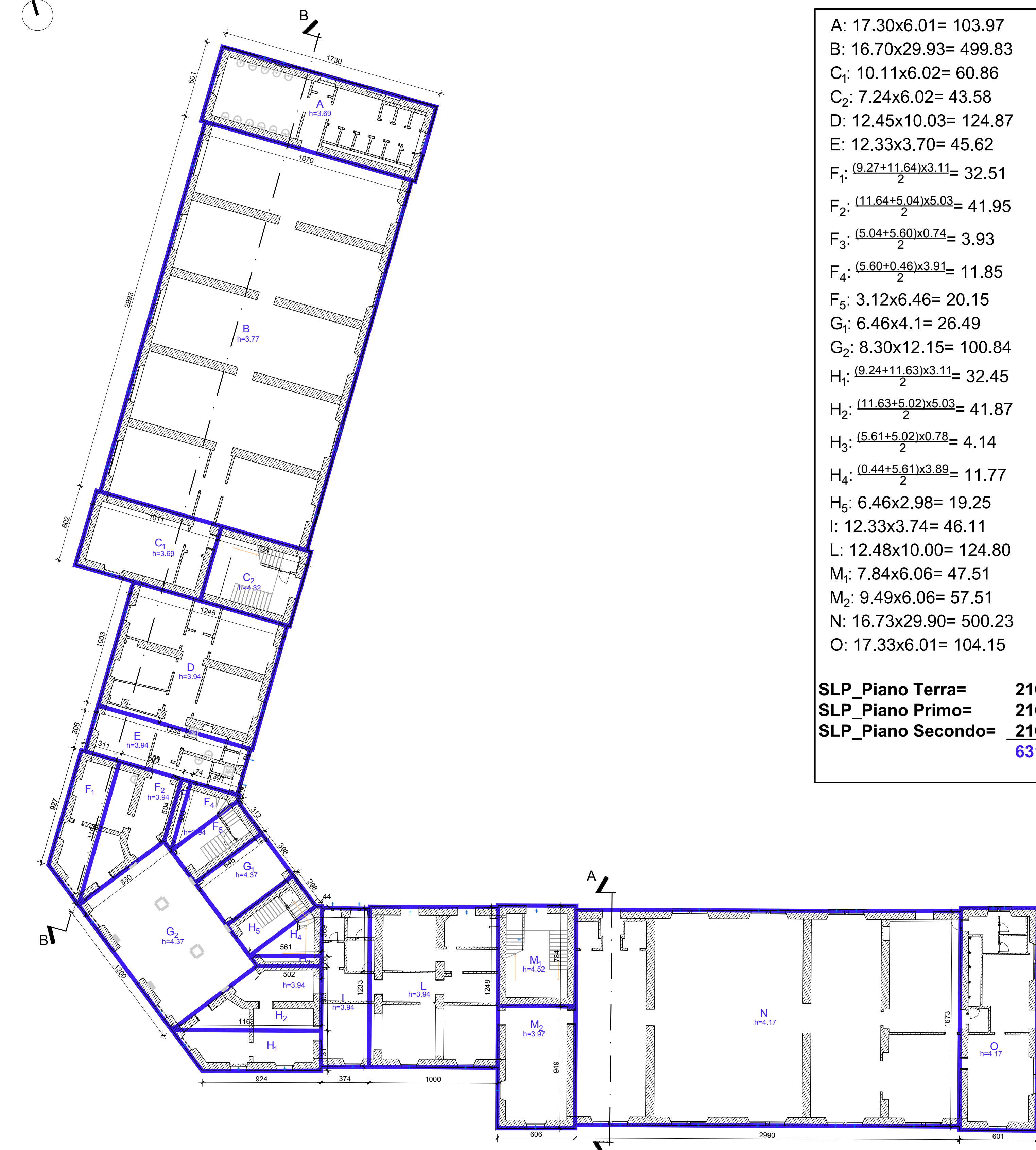


Sezione BB
1:200



PALAZZINA COMANDO

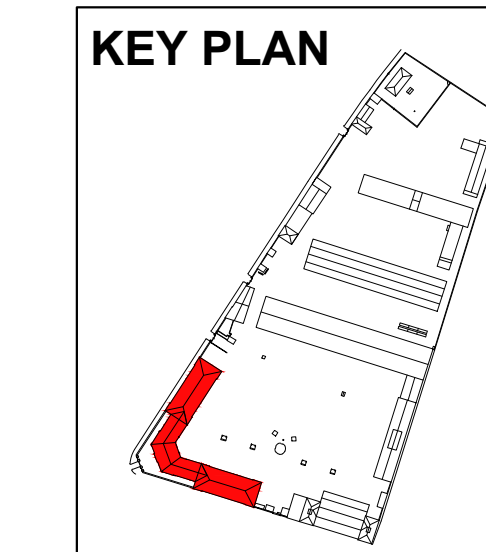
1:200



SLP_Piano Terra

A: 17.30x6.01= 103.97	
B: 16.70x29.93= 499.83	
C ₁ : 10.11x6.02= 60.86	
C ₂ : 7.24x6.02= 43.58	
D: 12.45x10.03= 124.87	
E: 12.33x3.70= 45.62	
F ₁ : $\frac{9.27+11.64}{2} \times 3.11 = 32.51$	
F ₂ : $\frac{11.64+5.04}{2} \times 5.03 = 41.95$	
F ₃ : $\frac{5.04+5.60}{2} \times 0.74 = 3.93$	
F ₄ : $\frac{5.60+0.46}{2} \times 3.91 = 11.85$	
F ₅ : 3.12x6.46= 20.15	
G ₁ : 6.46x4.1= 26.49	
G ₂ : 8.30x12.15= 100.84	
H ₁ : $\frac{9.24+11.63}{2} \times 3.11 = 32.45$	
H ₂ : $\frac{11.63+5.02}{2} \times 5.03 = 41.87$	
H ₃ : $\frac{5.61+5.02}{2} \times 0.78 = 4.14$	
H ₄ : $\frac{0.44+5.61}{2} \times 3.89 = 11.77$	
H ₅ : 6.46x2.98= 19.25	
I: 12.33x3.74= 46.11	
L: 12.48x10.00= 124.80	
M ₁ : 7.84x6.06= 47.51	
M ₂ : 9.49x6.06= 57.51	
N: 16.73x29.90= 500.23	
O: 17.33x6.01= 104.15	
SLP_Piano Terra= 2106.24 m²	
SLP_Piano Primo= 2106.24 m²	
SLP_Piano Secondo= 2106.24 m²	
6318.72 m²	

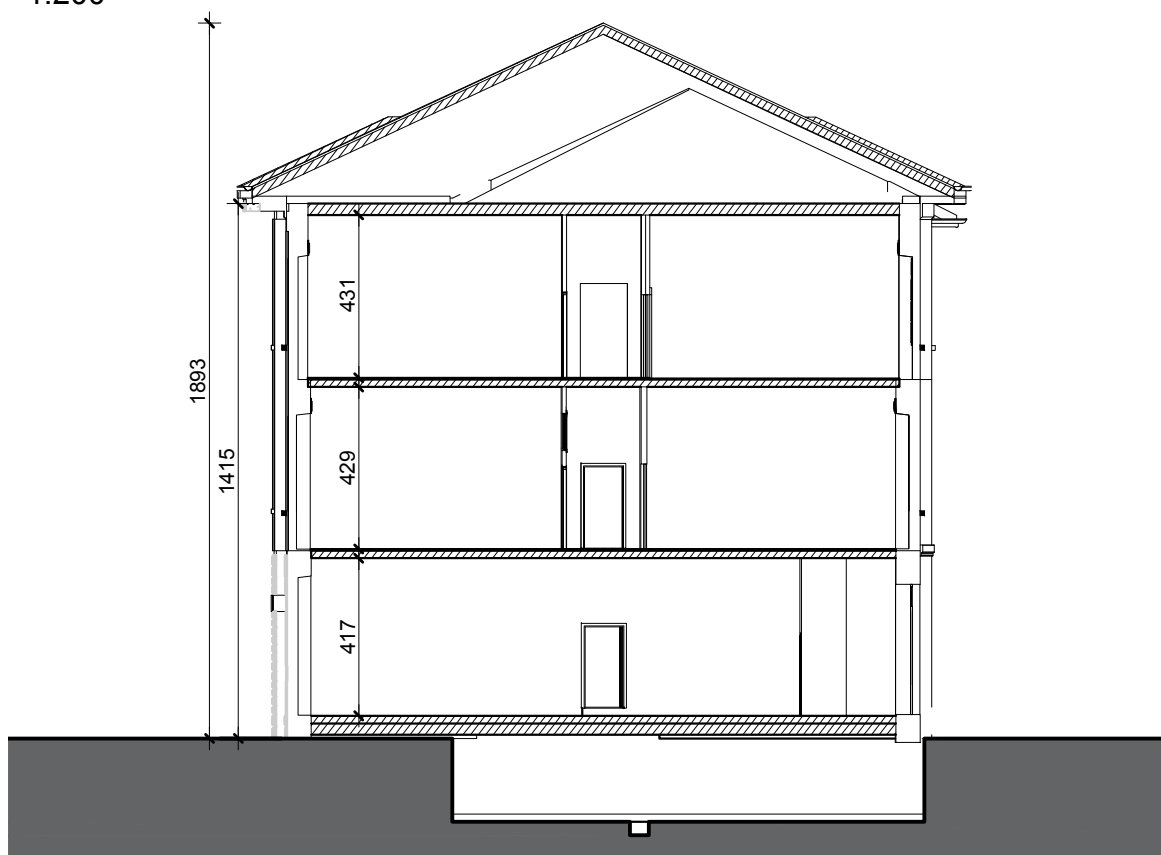
KEY PLAN



Calcolo SLP complessiva

SLP EDIFICIO MAGAZZINO	2908.90 m ²
SLP MENSA	1218.37 m ²
SLP PALAZZINA COMANDO	6318.72 m ²
Totale	10446,00 m²

Sezione AA
1:200



Sezione BB
1:200



U. O. Servizi Tecnici



Piano Attuativo - Compendio di proprietà dello Stato denominato "ex Caserma Papa", sito in Brescia, Via Franchi/Via Oberdan

Committente:
AGENZIA DEL DEMANIO
CORSO MONFORTE N. 32 - 20122 MILANO

Proprietà:
DEMANIO DELLO STATO

STATO DI FATTO
PIANTE E SEZIONI: EDIFICIO MAGAZZINO - MENSA - PALAZZINA COMANDO

TAV. 03

REV. 00

SCALA: 1:200

DATA EMISSIONE: 06/03/2018

Collaboratori:
Arch. Irene Mezzi

R.U.P.
Arch. Michele di Bella