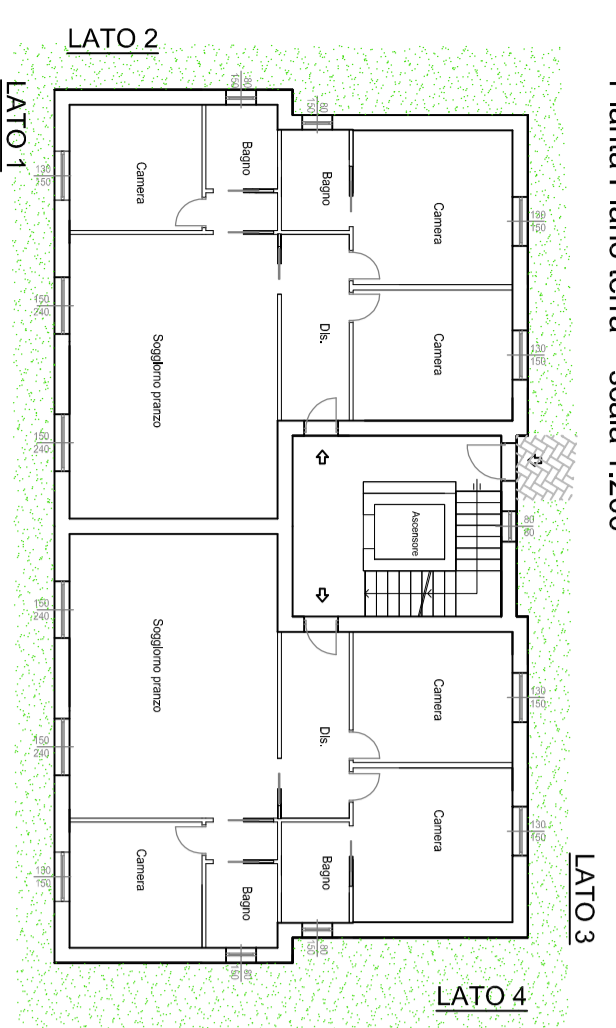
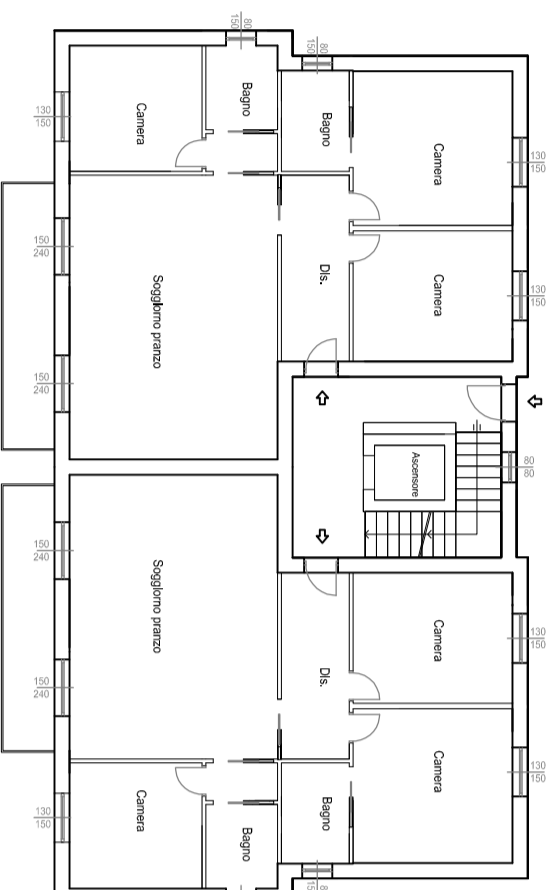


TIPOLOGIE EDILIZIE
LOTTO 1, LOTTO 2, LOTTO 3

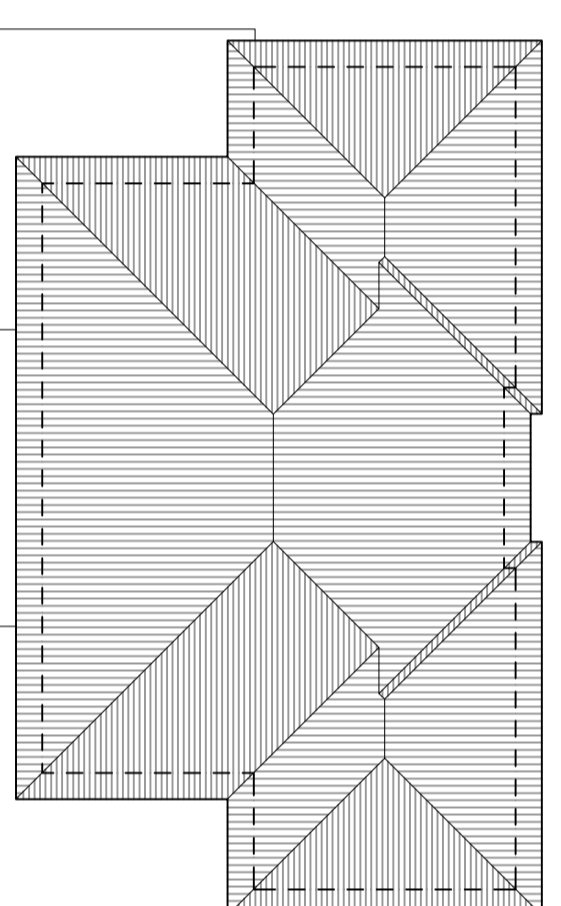
Pianta Piano terra - scala 1:200



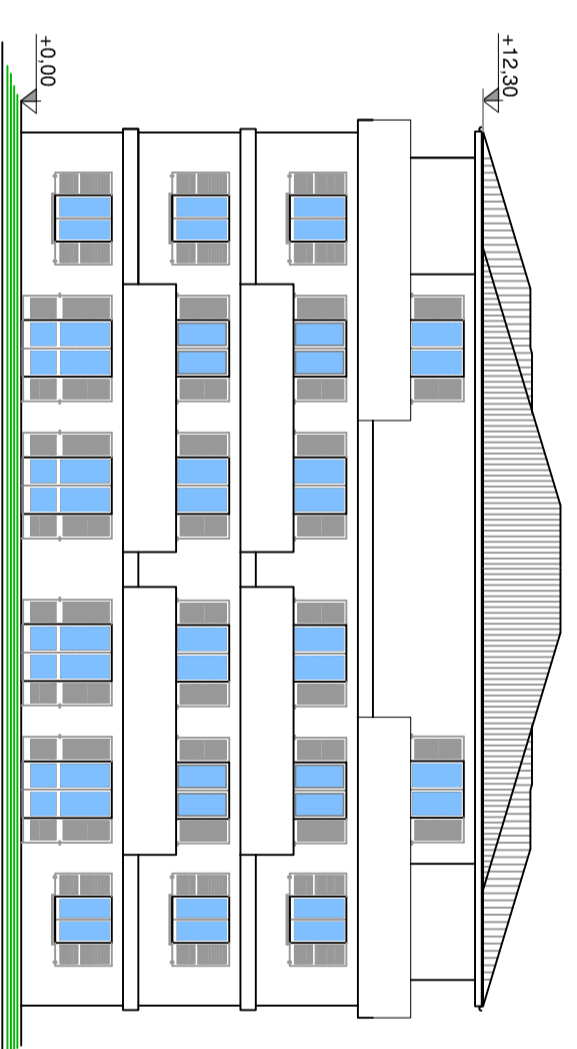
Pianta Piano primo - scala 1:200



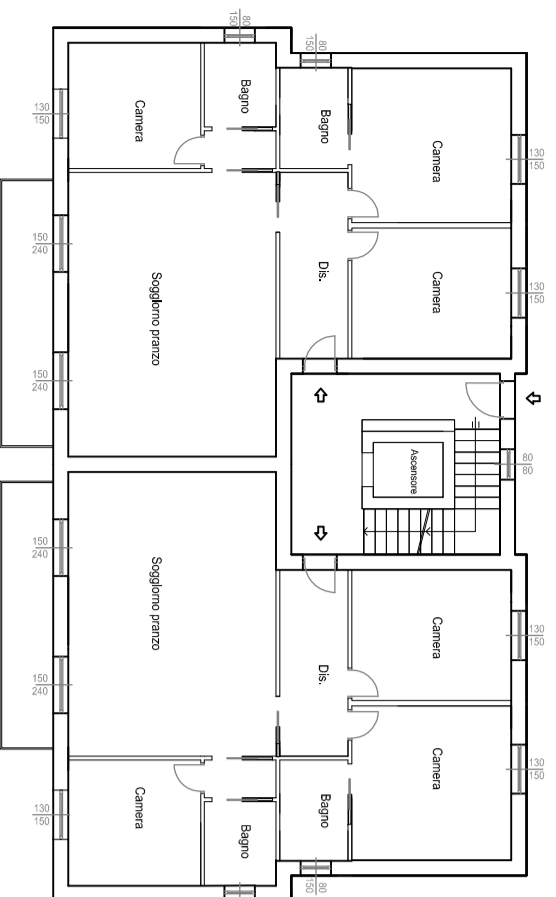
Pianta Copertura - scala 1:200



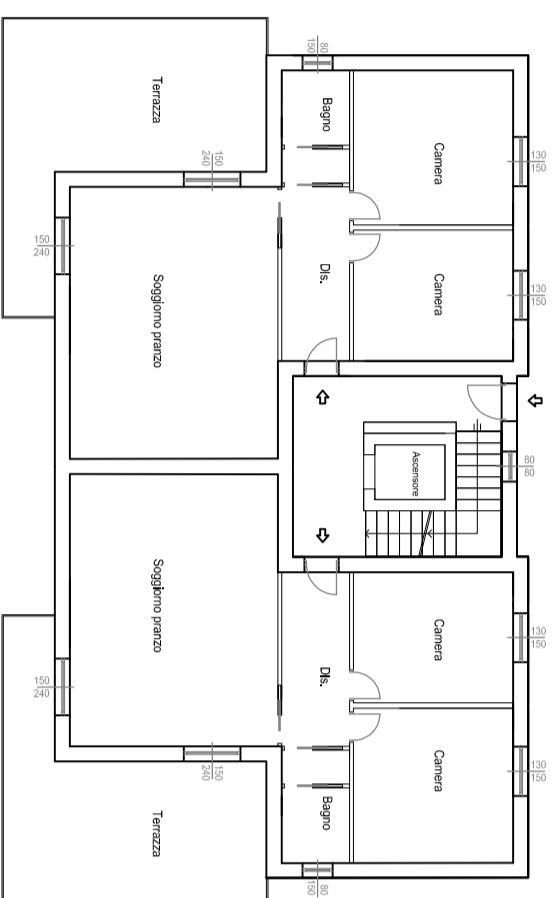
Prospetto LATO 1 - scala 1:200



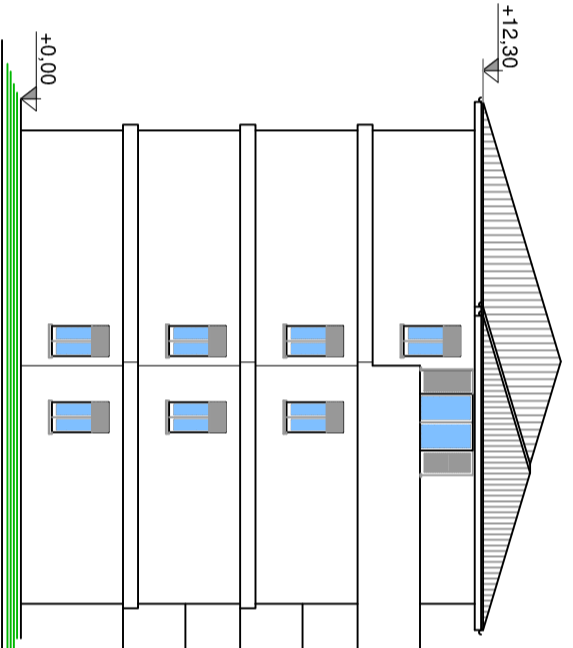
Pianta Piano secondo - scala 1:200



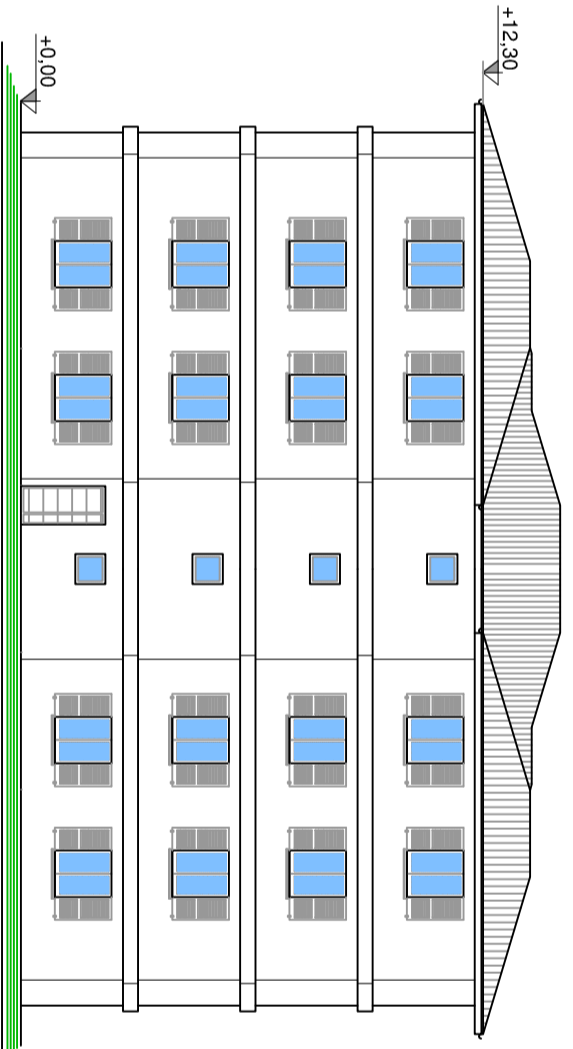
Pianta Piano terzo - scala 1:200



Prospetto LATO 2 e LATO 4 - scala 1:200

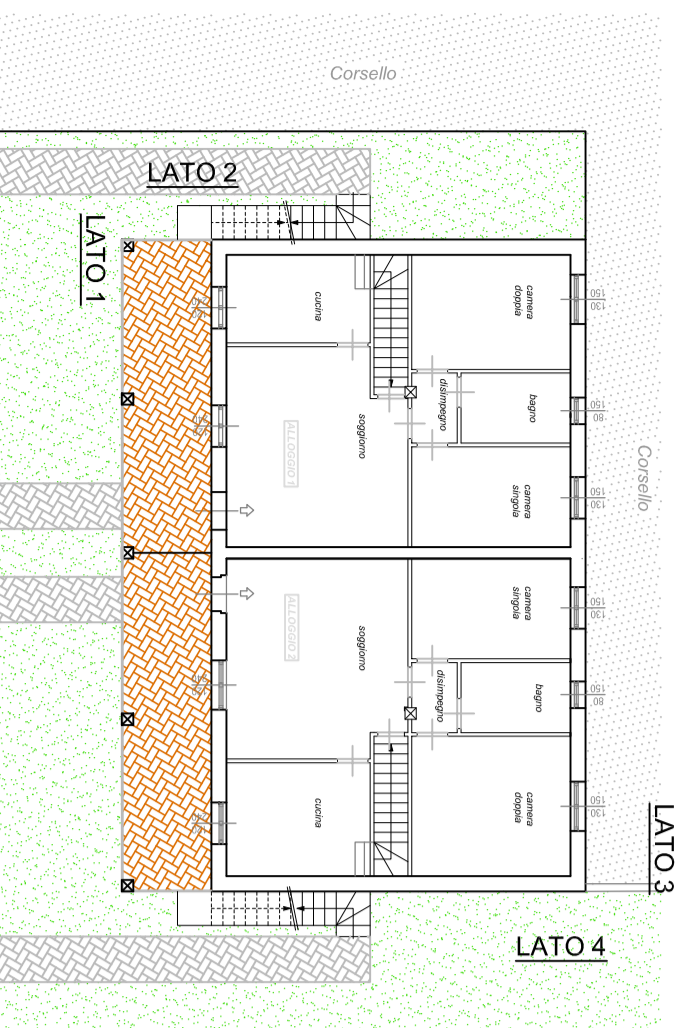


Prospetto LATO 3 - scala 1:200

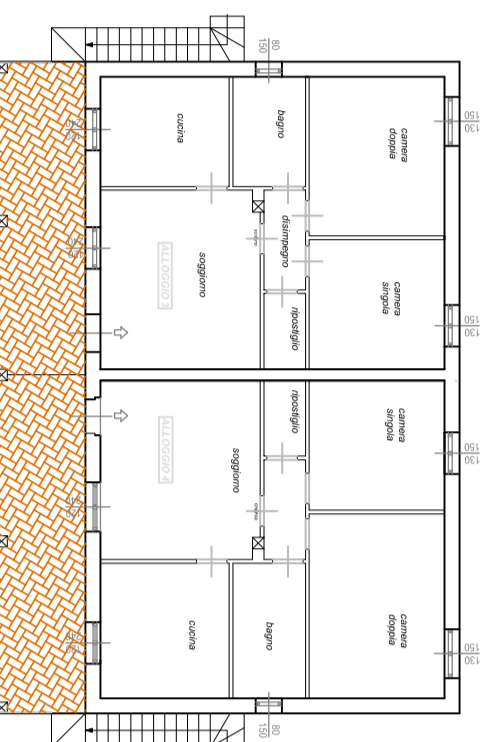


TIPOLOGIE EDILIZIE
LOTTO 5

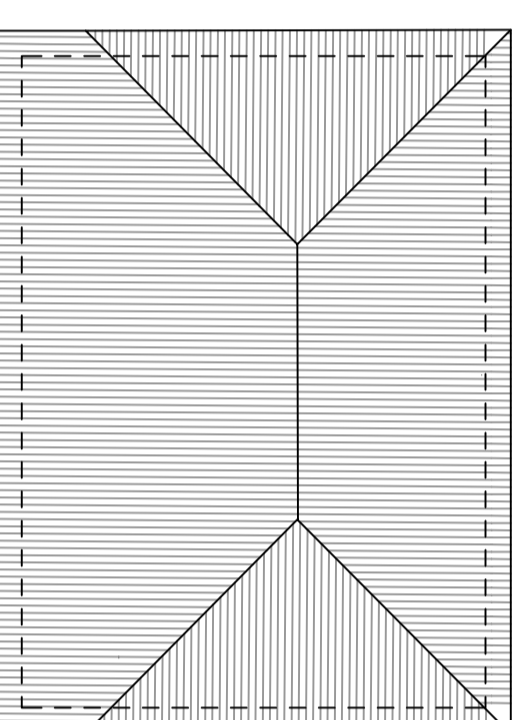
Pianta Piano terra - scala 1:200



Pianta Piano primo - scala 1:200



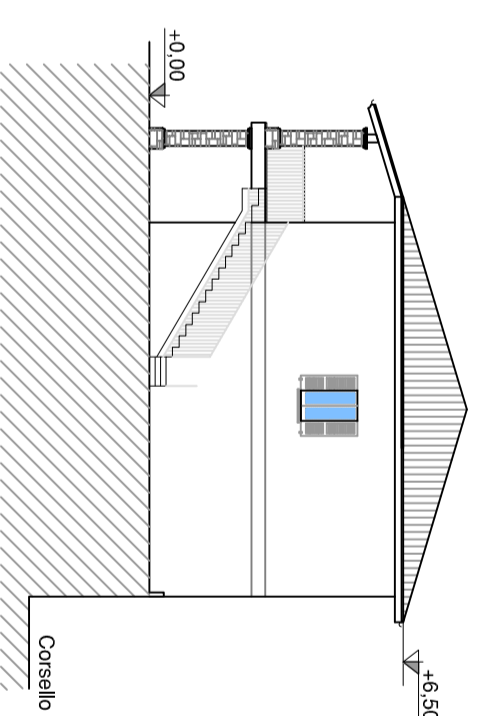
Pianta Copertura - scala 1:200



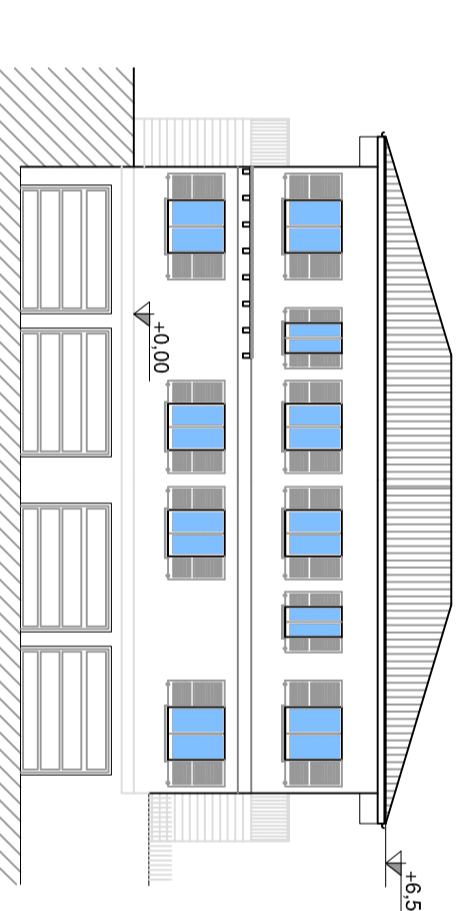
Prospetto LATO 1 - scala 1:200



Prospetto LATO 2 e LATO 4 - scala 1:200

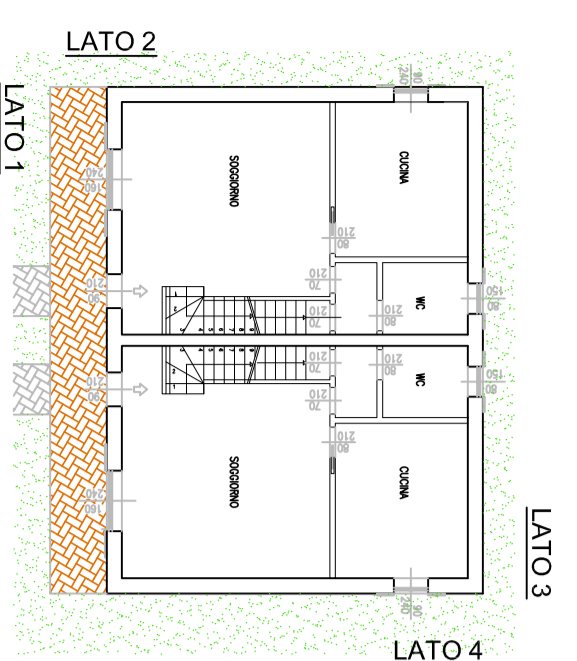


Prospetto LATO 3 - scala 1:200

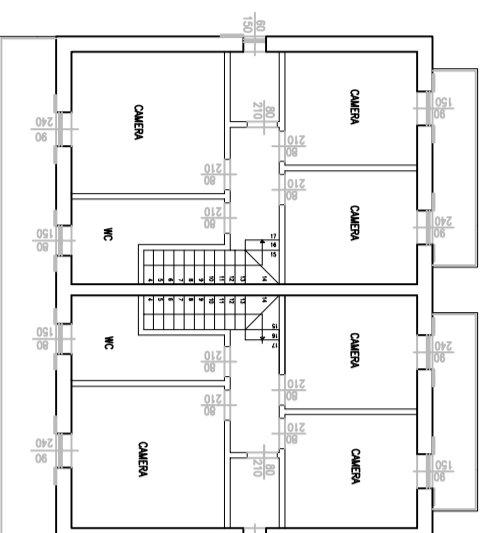


TIPOLOGIE EDILIZIE
LOTTO 5 e LOTTO 6

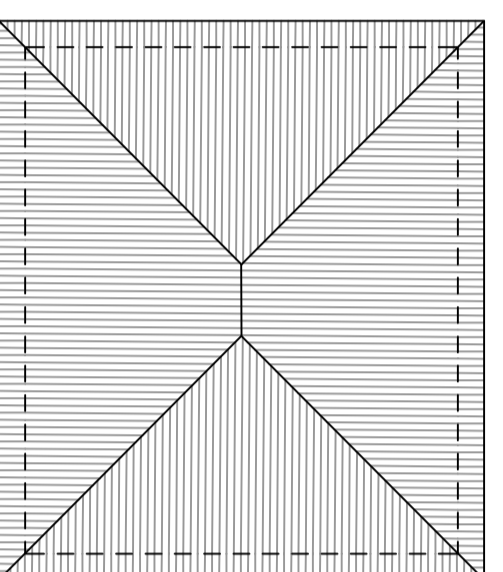
Pianta Piano terra - scala 1:200



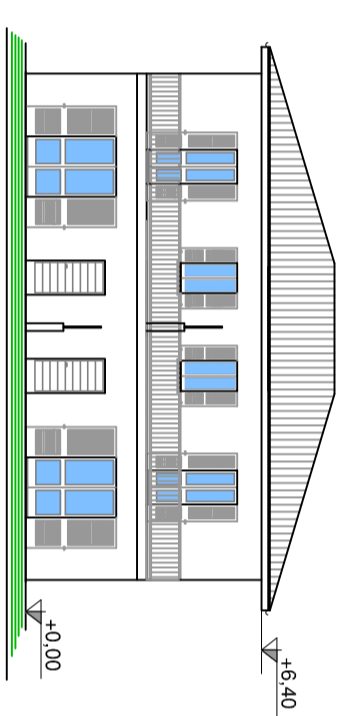
Pianta Piano primo - scala 1:200



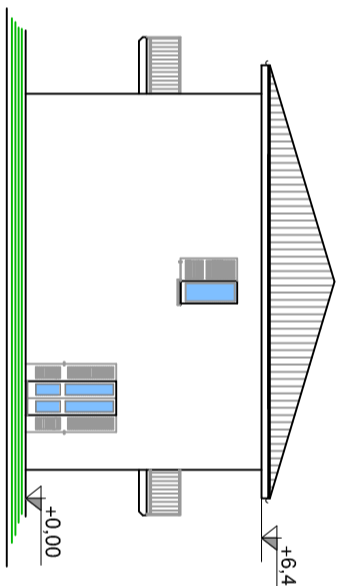
Pianta Copertura - scala 1:200



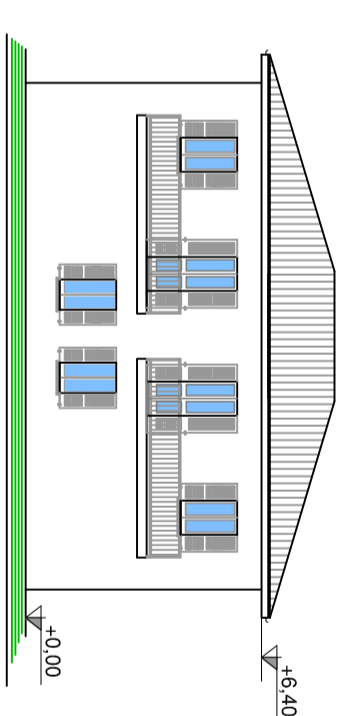
Prospetto LATO 1 - scala 1:200



Prospetto LATO 2 e LATO 4 - scala 1:200



Prospetto LATO 3 - scala 1:200



COMUNE DI BRESCIA

VARIANTE AL PIANO ATTUATIVO
APPROVATO CON DELIBERA DI GIUNTA 1001
DEL 31.08.2008 N. 49515 PG

revisione	r. revisione	data
modifica impianto planivolumetrico	01	Maggio 2017

Titolo:	Elaborato:
Stato di progetto in variante: Pianta e prospetti Lotto 1 - Lotto 2 - Lotto 3 - Lotto 4 - Lotto 5 - Lotto 6	T08
	Scala: 1:200
	Data: Dicembre 2016

COMMITTENTI:	TINTI MARIA LUISA Via XXV Aprile, 143 25028 Rovato - Brescia	TINTI ROSA Via Don Suzzani, 35 25020 Azzone Mella - Brescia	TINTI ROBERTO Via Fondi, 43 25151 Brescia
--------------	--	---	---

PROGETTISTA	DIRETTORE DEI LAVORI	IMPRESA ESECUTRICE
Ing. Luca Vezzoli Ordine Ing. Brescia 5550		