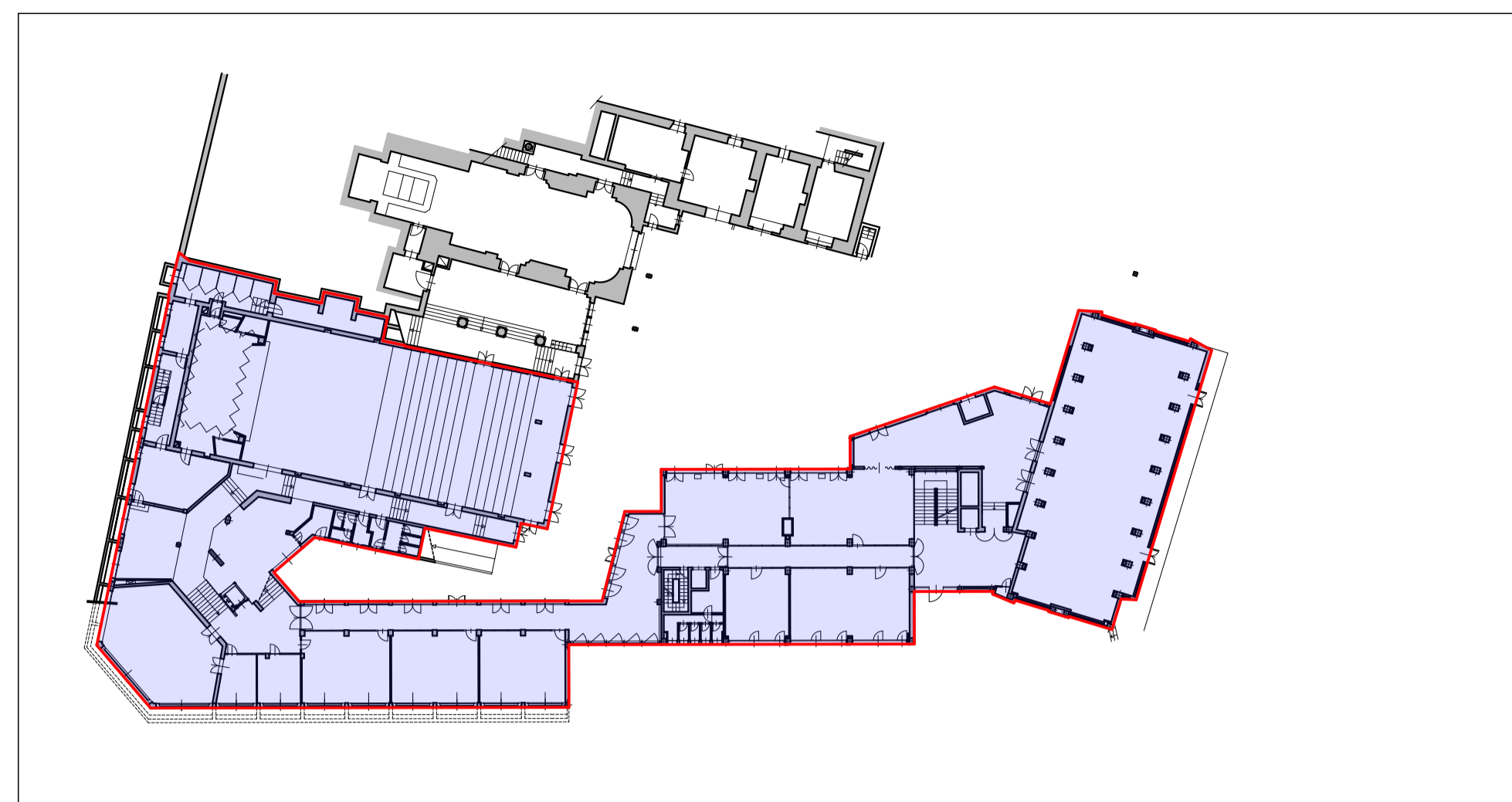
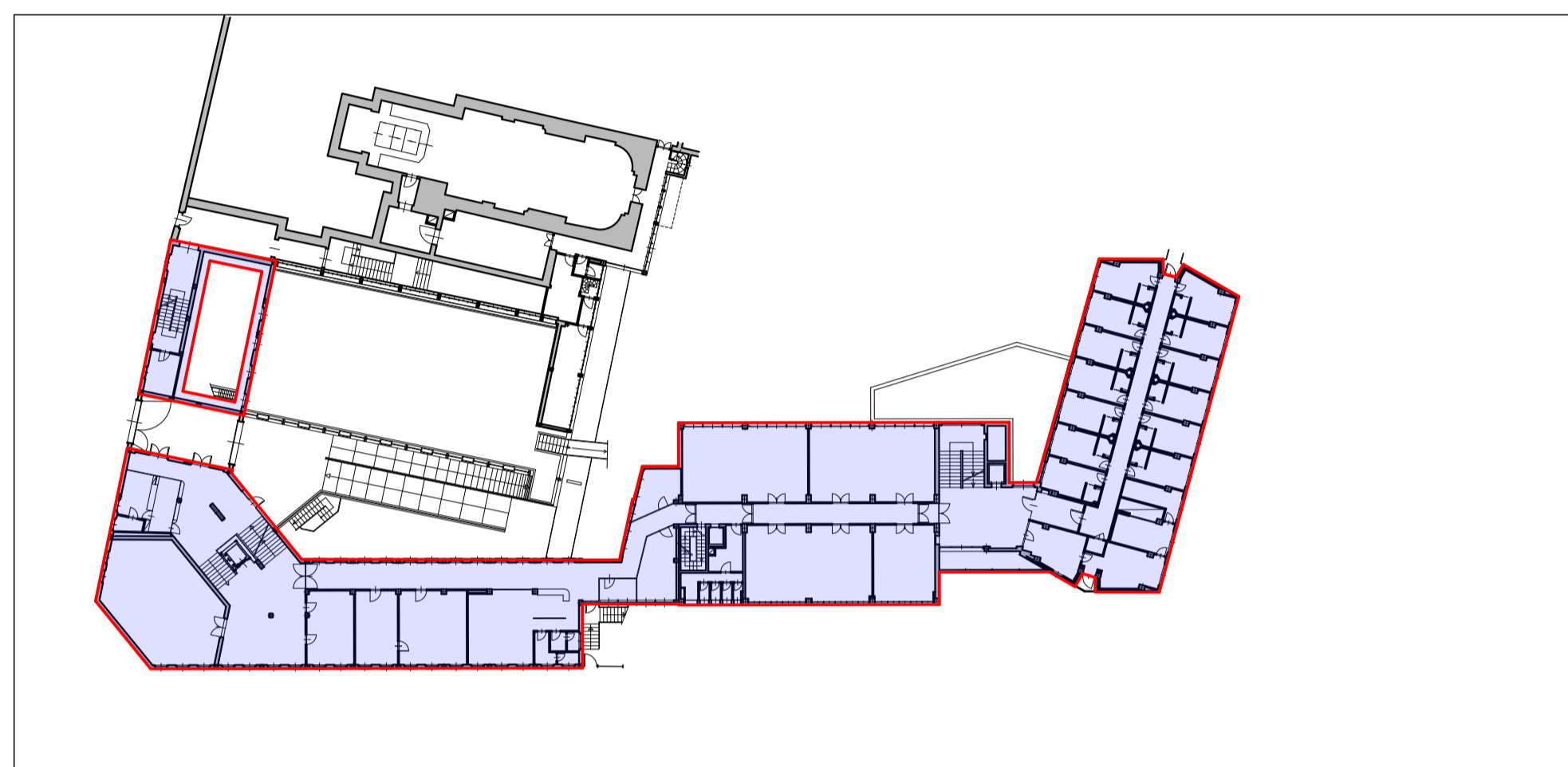


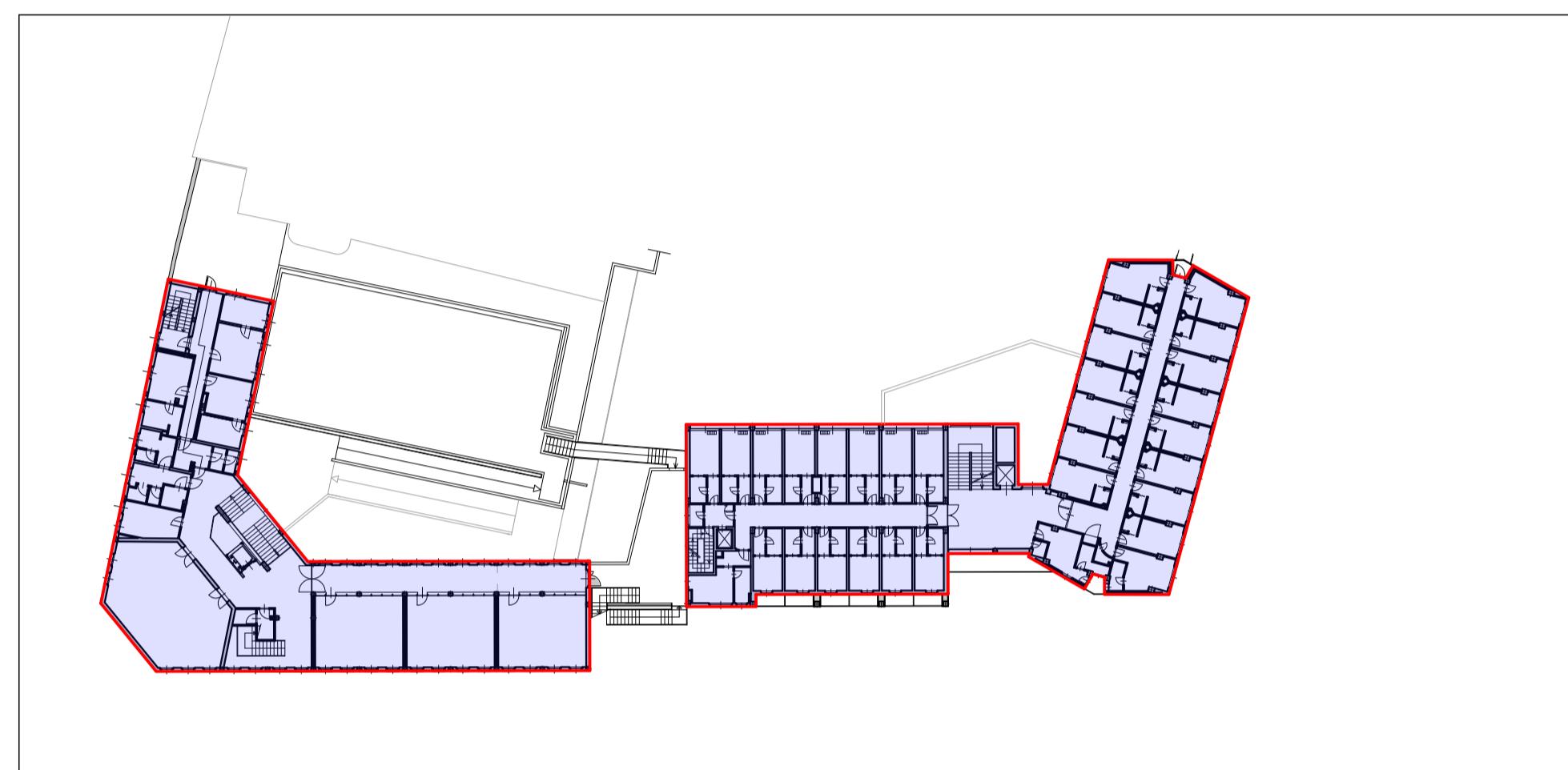
PIANO PIANO INTERRATO 1:500



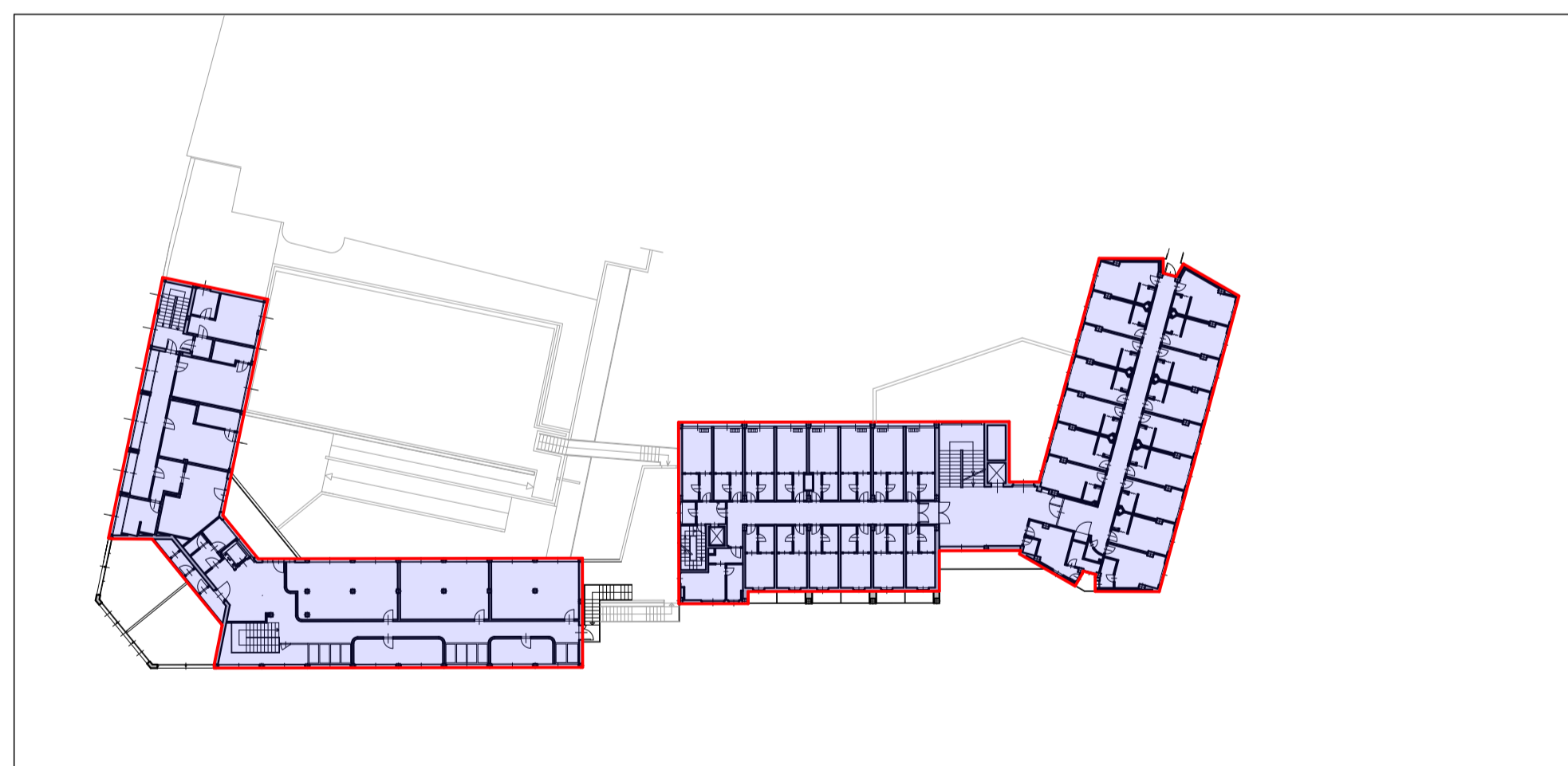
PIANTA PIANO QUOTA CORTILE 1:500



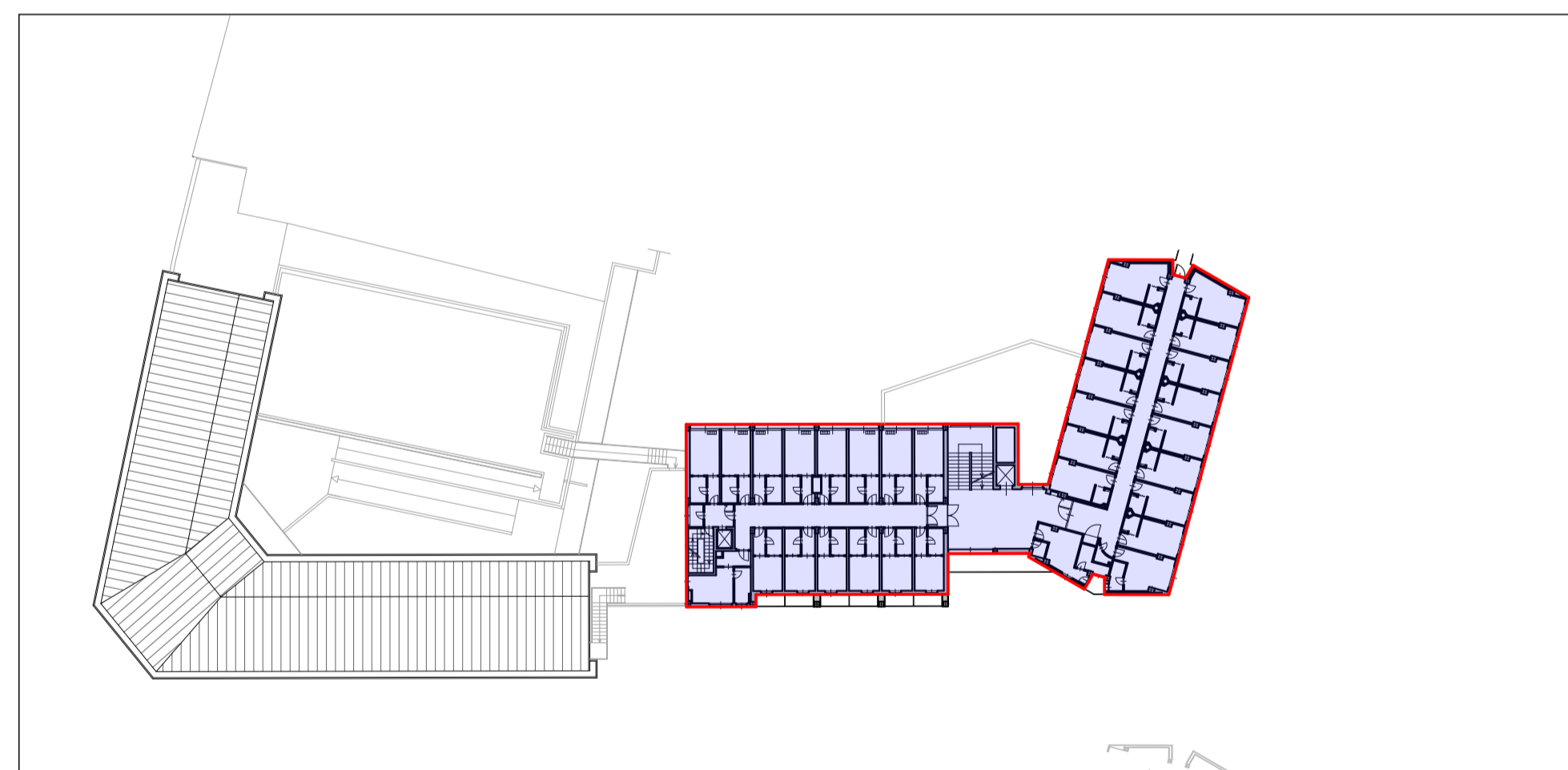
PIANTA PIANO RIALZATO 1:500



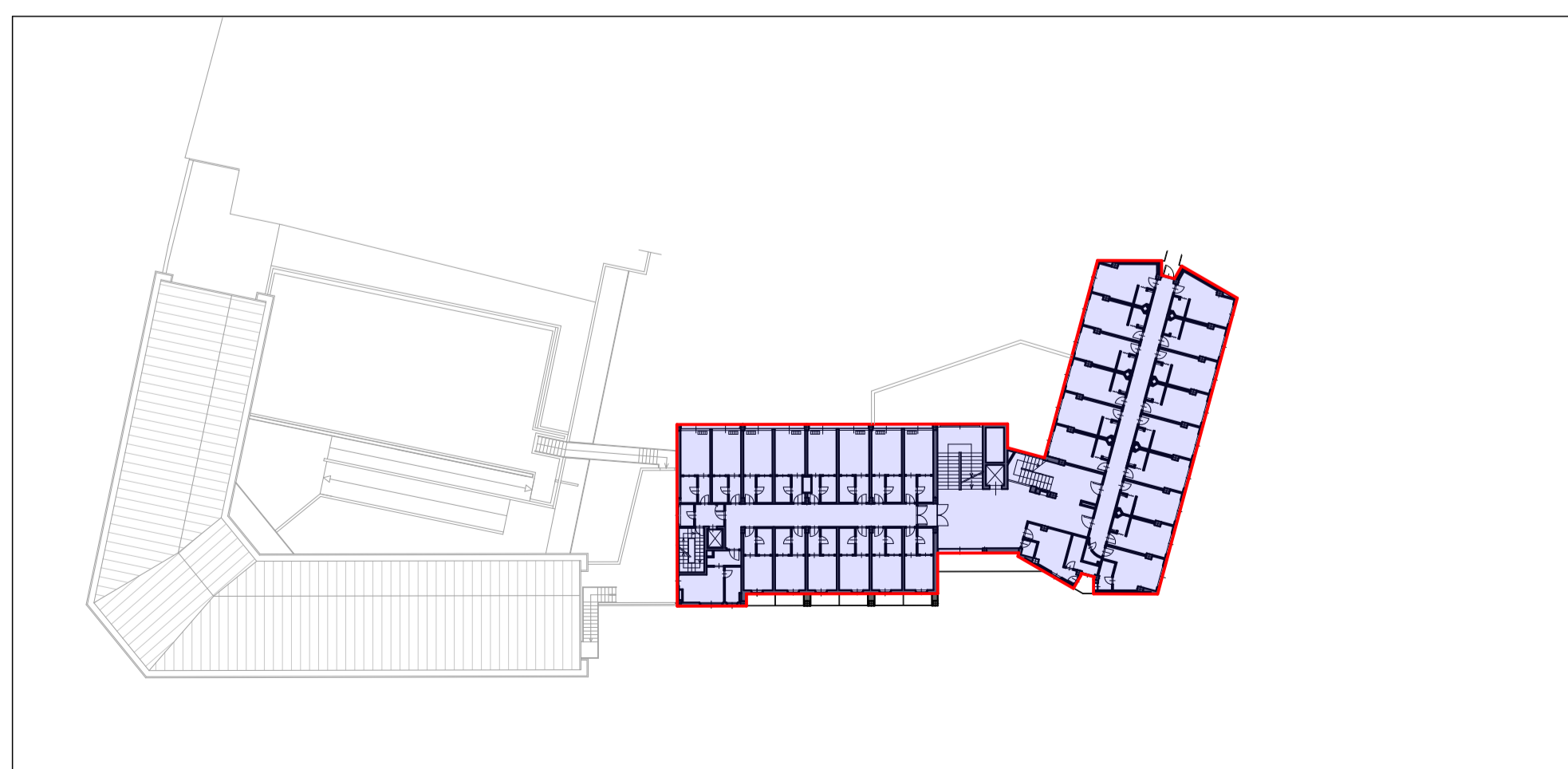
PIANTA PIANO PRIMO 1:500



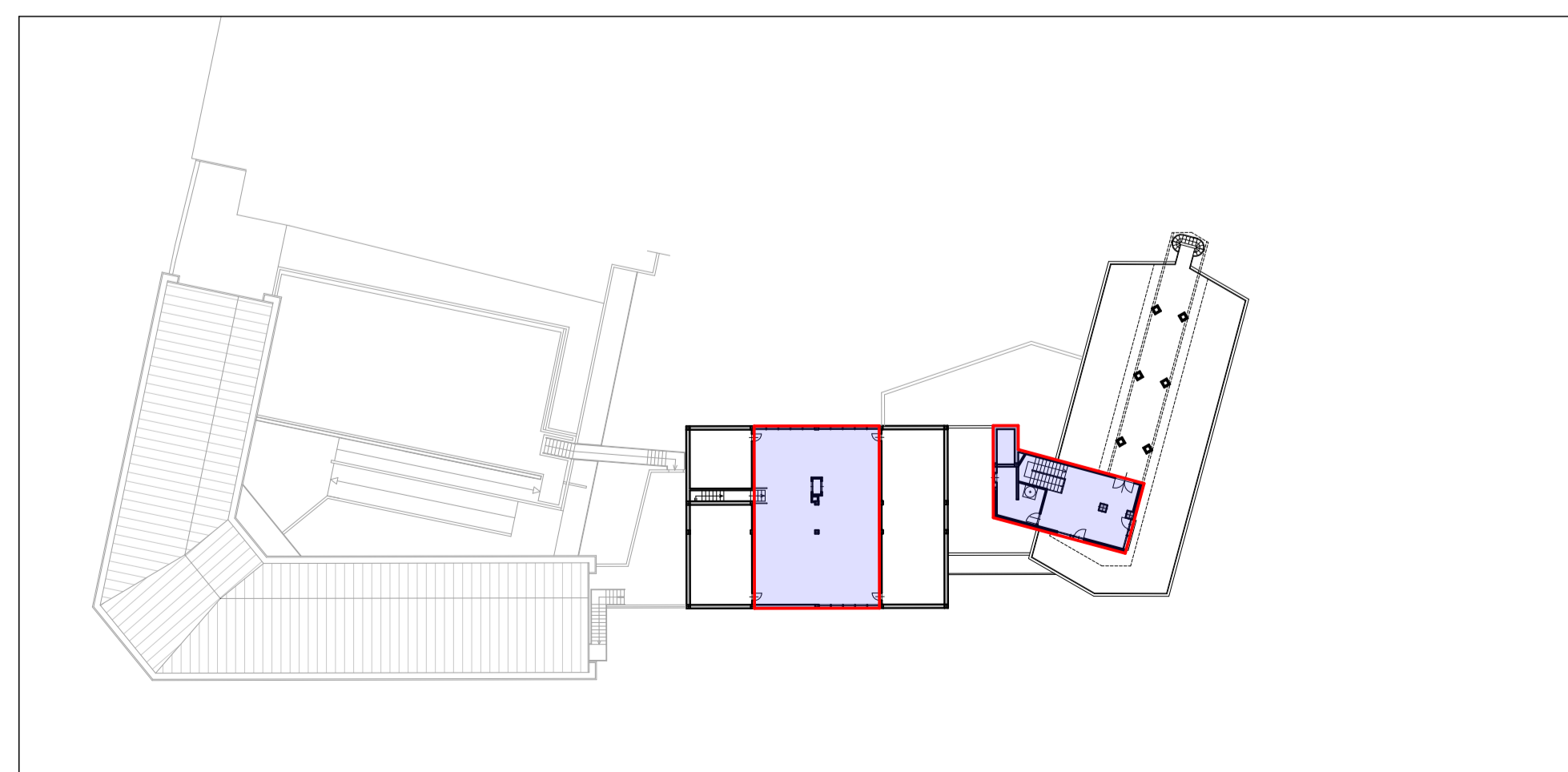
PIANTA PIANO SECONDO 1:500



PIANTA PIANO TERZO 1:500



PIANTA PIANO QUARTO 1:500



PIANTA PIANO QUINTO 1:500

SUPERFICI DI RILIEVO

PIANO	SLP (m ²)	SNR (m ²)
PIANO INTERRATO		2.447
PIANO QUOTA CORTILE	1.978	
PIANO RIALZATO	1.314	
PIANO PRIMO	1.283	
PIANO SECONDO	1.188	
PIANO TERZO	702	
PIANO QUARTO	708	
PIANO QUINTO	231	

TOTALE SLP (muri inclusi) 7.404 m²

TOTALE SNR 2.447 m²

PROVINCIA SANT'ANTONIO DEI FRATI MINORI
Via Guido Guinizelli 3
BOLOGNA

FRANCISCANUM srl
Via Fermi, 7
25087 - Salò(BS)

PROGETTO
NUOVO COMPLESSO RESIDENZIALE "FRANCISCANUM"
Via Callegari 11, Brescia

PIANO ATTUATIVO

RIFERIMENTO 20-22

TAVOLA

GRAFICO DI RILIEVO
CONTEGGIO SUPERFICI

TAV. N° **12**

SCALA: 1:500

STATO AGGIORNAMENTI	data
rev. n°	motivo modifica
00	CREAZIONE 11/07/2022

PROGETTAZIONE
b+ma
ARCHITETTURA
URBANISTICA
INGEGNERIA

PROGETTISTA
Arch. Fausto Baresi
Ing. Riccardo Manfredi
Arch. Guillermo Arnaudo

B+MAssociati srl
Viale Duca degli Abruzzi 103
25124 - Brescia
tel 030398499 - fax 0303387659
e-mail info@bmaari.it
sito web www.bmaari.it